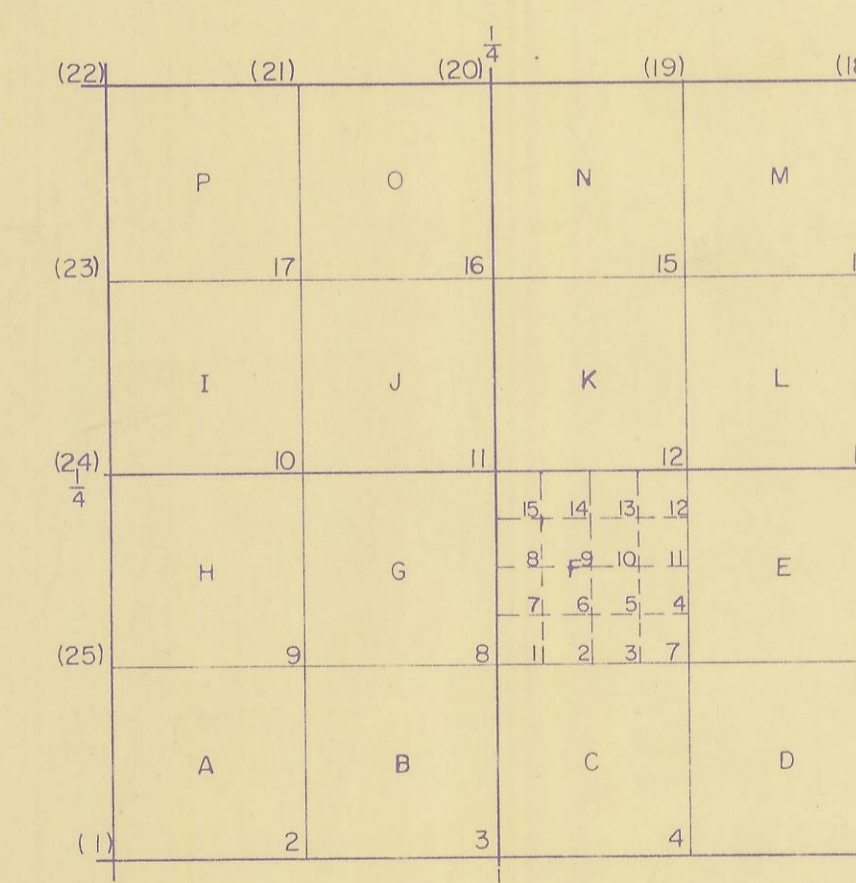


LEGEND

- ◇----- ORIGINAL GOVERNMENT CORNER SEARCHED FOR - NOT FOUND
- ◇----- ORIGINAL GOVERNMENT CORNER FOUND
- ◇----- FOREST SERVICE CORNER
- ◇----- STANDARD B.L.M. CORNER
- ◇----- STANDARD D.W.R. CORNER
- ◇----- STANDARD BUTTE CORNER - 2" IRON PIPE AND BRASS CAP
- CORNER MONUMENT - NO HISTORY - SHOWN ON RECORD MAP
- CORNER MONUMENT - NO HISTORY
- ORIGINAL CORNER MONUMENT - SHOWN ON RECORD MAP
- PROPORTIONED CORNER SET BY SURVEYOR - SHOWN ON RECORD MAP
- CORNER MONUMENT SET BY SURVEYOR - NOT SHOWN ON RECORD MAP
- CORNER SEARCHED FOR NOT FOUND - DATE OF SEARCH
-
-
-

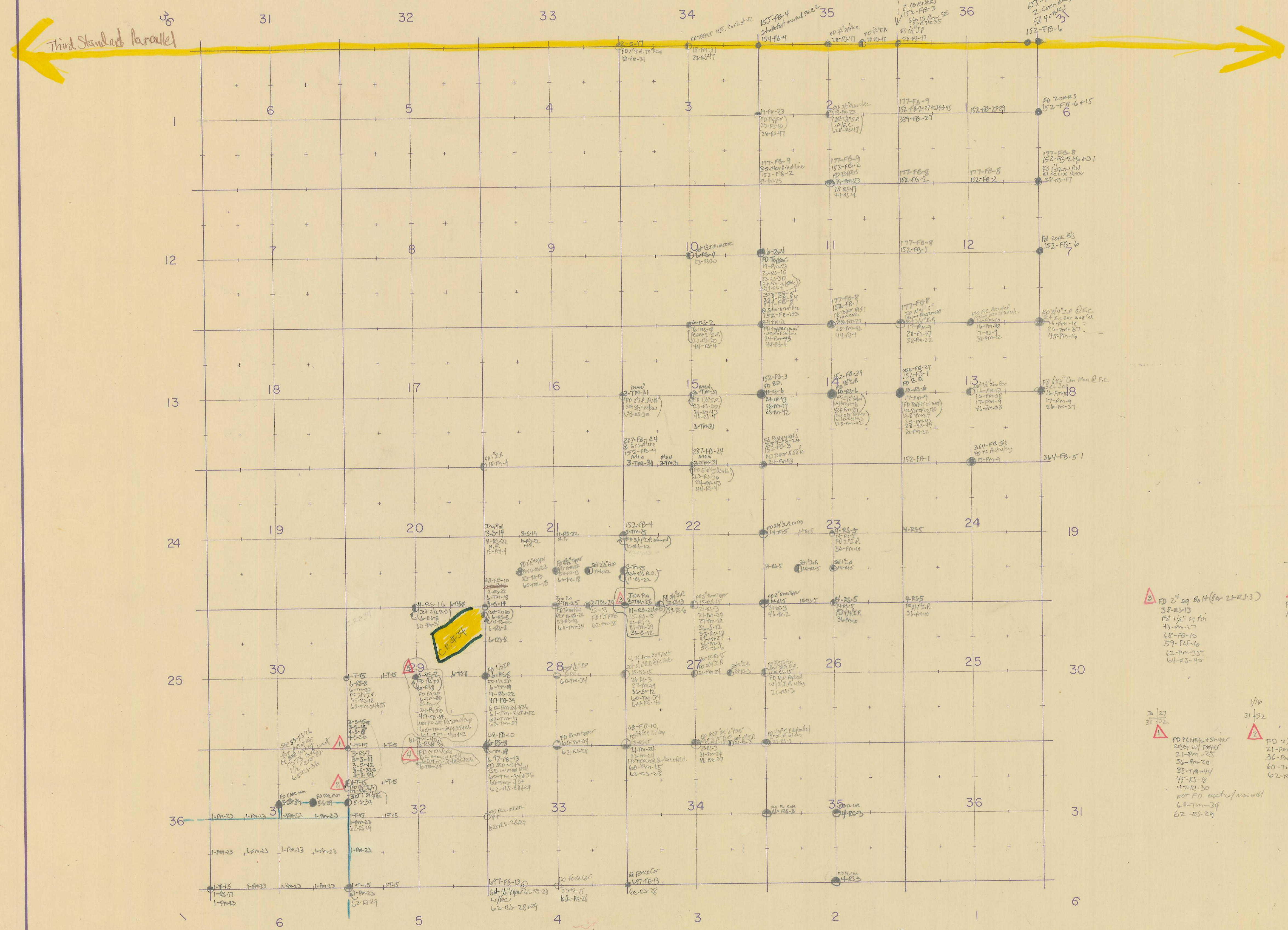
NOTES

- 32-PM-25 ----- BOOK 32 OF PARCEL MAPS PAGE 25
- 32-RS-25 ----- BOOK 32 OF RECORD OF SURVEY MAPS PAGE 25
- 32-S-25 ----- BOOK 32 OF MAPS (SUBDIVISION) PAGE 25
- 114-FB-25 ----- BOOK 114 PAGE 25 OF COUNTY SURVEY FIELD NOTES
- C-506 ----- MAP ON FILE PUBLIC WORKS DEPARTMENT
- GR ----- CORNER RECORD FILED
- PS ----- PRIVATE SURVEYORS INFORMATION
- M.O.R. ----- MOUND OF ROCKS



Section Corner Index Typical

() - Special case
 EXAMPLE:
 18-3 = South 1/4 corner of Section 18
 18-F-9 = Center of NW 1/4 of SE 1/4 of Section 18



FD 2 1/2" 29 60 1/4 (for 21-25.3)
 38-25-13
 43-25-17
 48-25-10
 59-25-16
 64-25-10

FD 1 1/2" 12 1/2 cap
 per 60-25-24
 62-25-11
 63-25-27

FD 2 1/2" 30
 21-25-25
 26-25-20
 32-25-14
 45-25-18
 47-25-30
 NOT FD exact w/ mound
 62-25-29

FD 2 1/2" 30
 21-25-25
 36-25-20
 60-25-34
 62-25-19

FD 2 1/2" 30
 21-25-25
 36-25-20
 60-25-34
 62-25-19

- Formland Colony No 1 Boundary (1-23)

Date of last entry _____

COUNTY OF YUBA
 DEPARTMENT OF PUBLIC WORKS
 MARYSVILLE CALIFORNIA

Section Corner Monumentation
 T.15 N.-R.4 E.-M.D.B./M.

DWN. BY	DATE	PROJECT NUMBER
CHK. BY	DATE	
F.B.	SCALE 1" = 2000'	